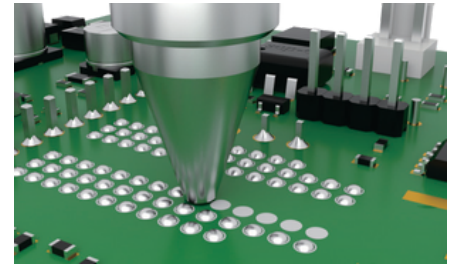




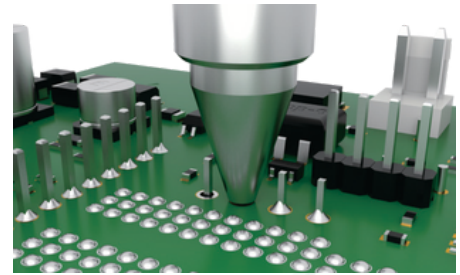
Desoldering Tool



QUICK TV2



Tin Removal on Flat



Through-hole Component Tin Removal

Features

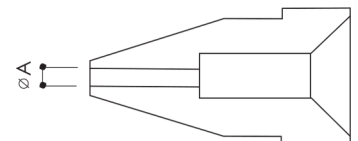
- The heating system features closed loop sensor for accurate temperature control.
- Built-in powerful vacuum pump.
- Heater isolated from the power grid with low-voltage power supply, which is safe and reliable.
- LCD display with touch button to adjust temperature and sleep mode is available.
- Digital temperature calibration to improve reliability.
- Unique nozzle and heating tube allow solder to be sucked into the filter even in molten state, which does not require frequent maintenance and is efficient.
- Vacuum hose is anti-scald, preventing it from being damaged due to contact with heating parts.
- The unit is lead-free. With lead-free nozzle it can realize lead-free desoldering at low temperature.



Operation Diagram

Replaceable Nozzles

P/N	AN01-08	AN01-10	AN01-13	AN01-16
∅A(mm)	0.8	1.0	1.3	1.6



▼ Consumables



▼ Packing List

QUICK TV2	Main Unit、 Desoldering Hand-piece、 Desoldering Holder、 Sponge、 Brass Wool、 Heat-resistant Pad、 Grounding Cord 、 Nozzles、 Power Supply Cord、 Instruction Manual、 Warranty Card
-----------	---

▼ Specifications

Model	TV2
Power Consumption	200W
Pump Power	12V/2A
Temperature	300°C~500°C
Pump	Diaphragm
Vacuum	650mmHg
Nozzle to Ground Resistance	<2Ω
Nozzle to Ground Potential	<2mV
Dimensions	199*189*134mm
Weight	About 3.2Kg